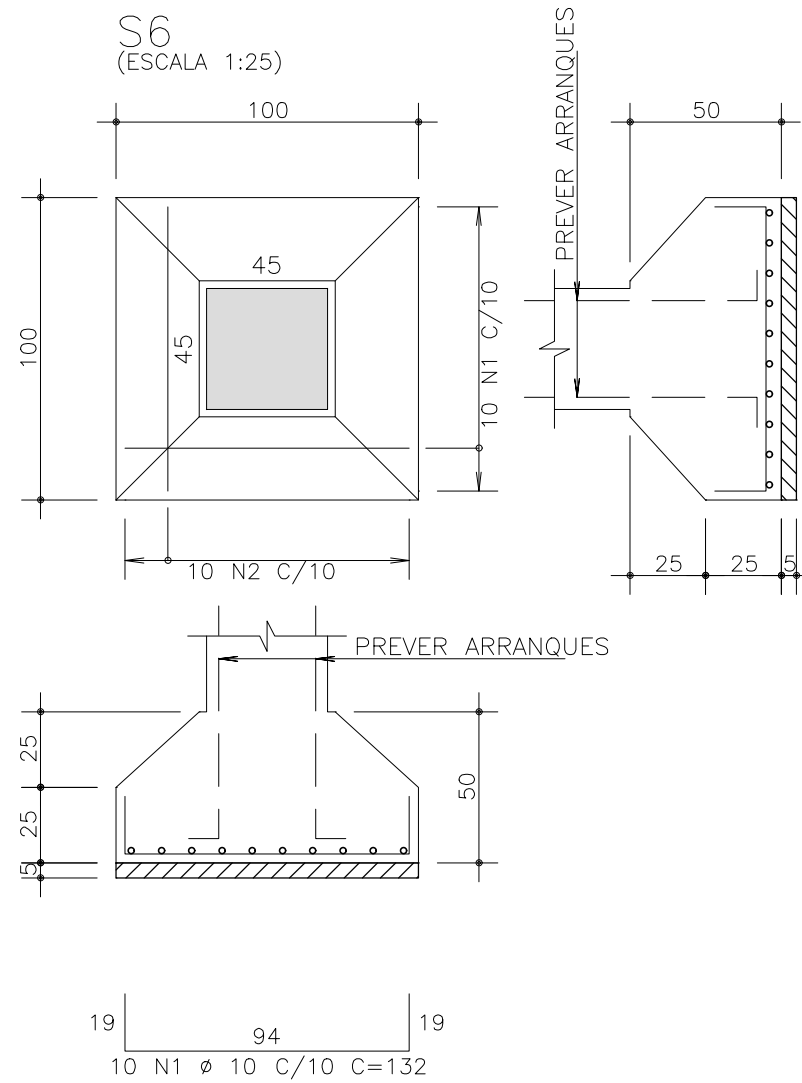
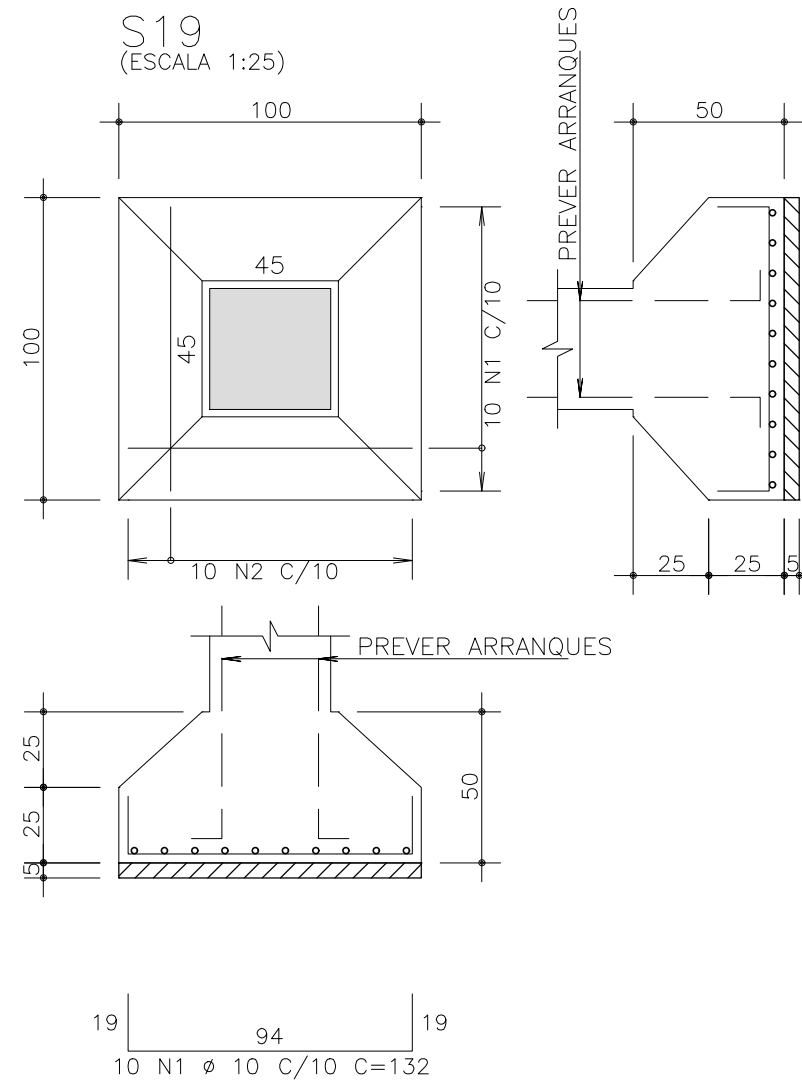
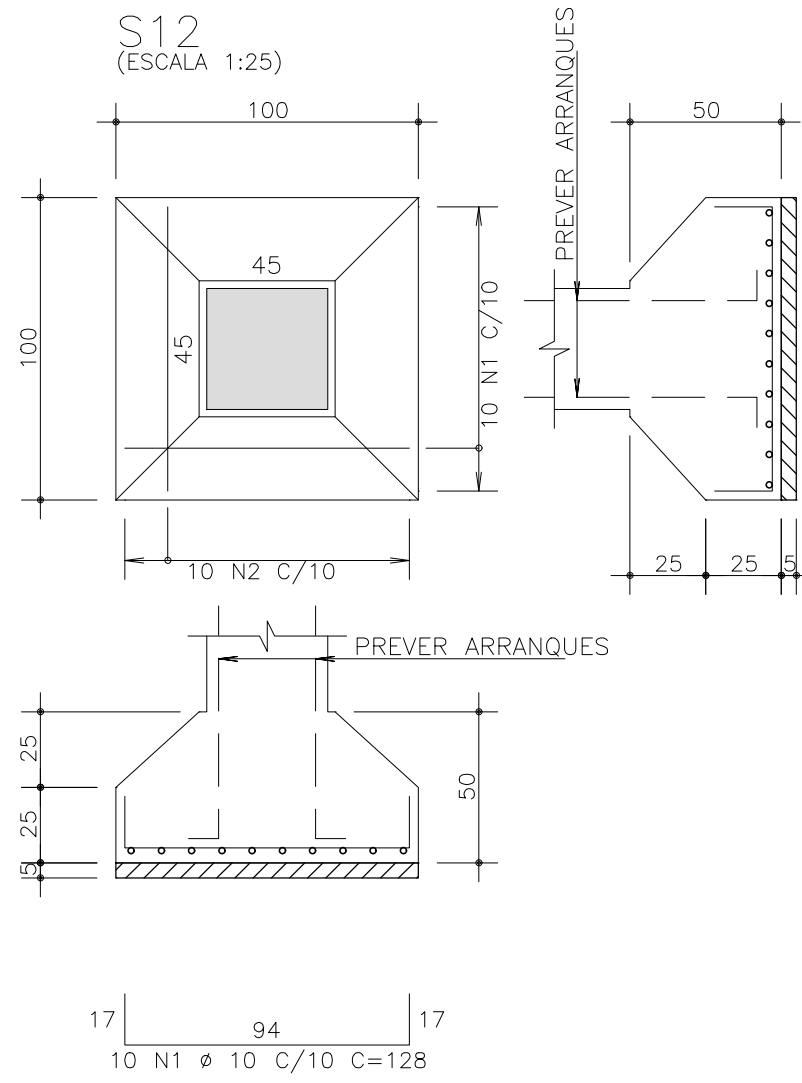
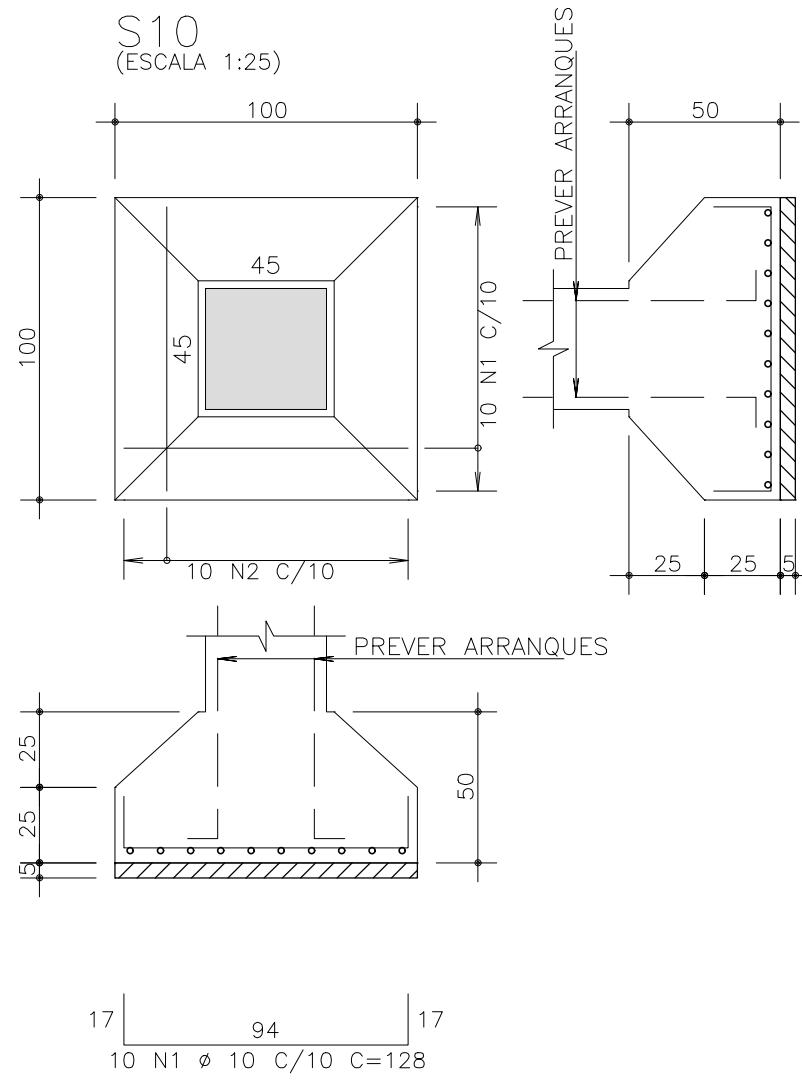
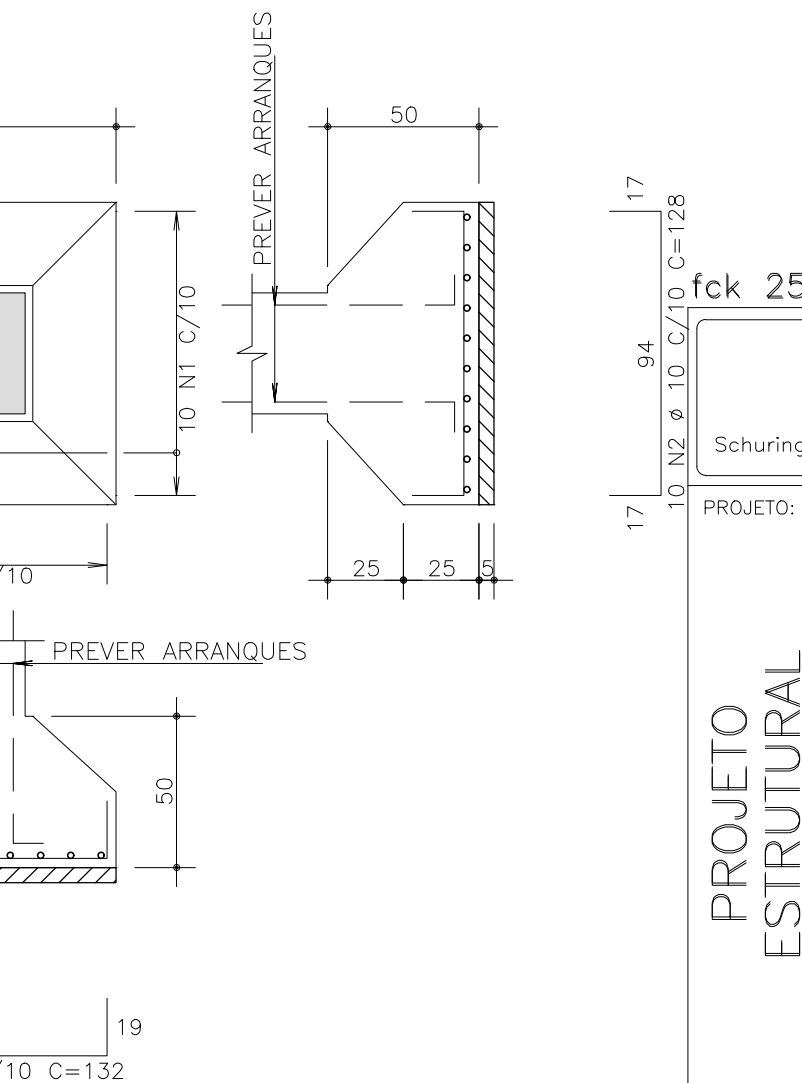
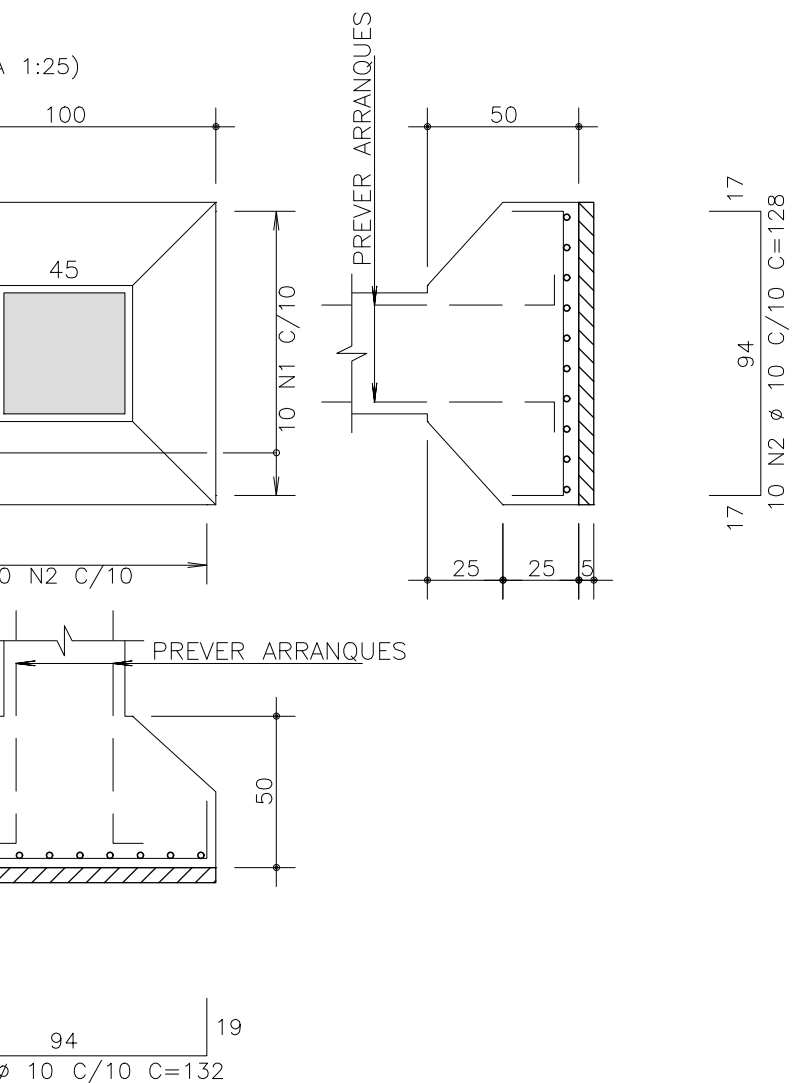
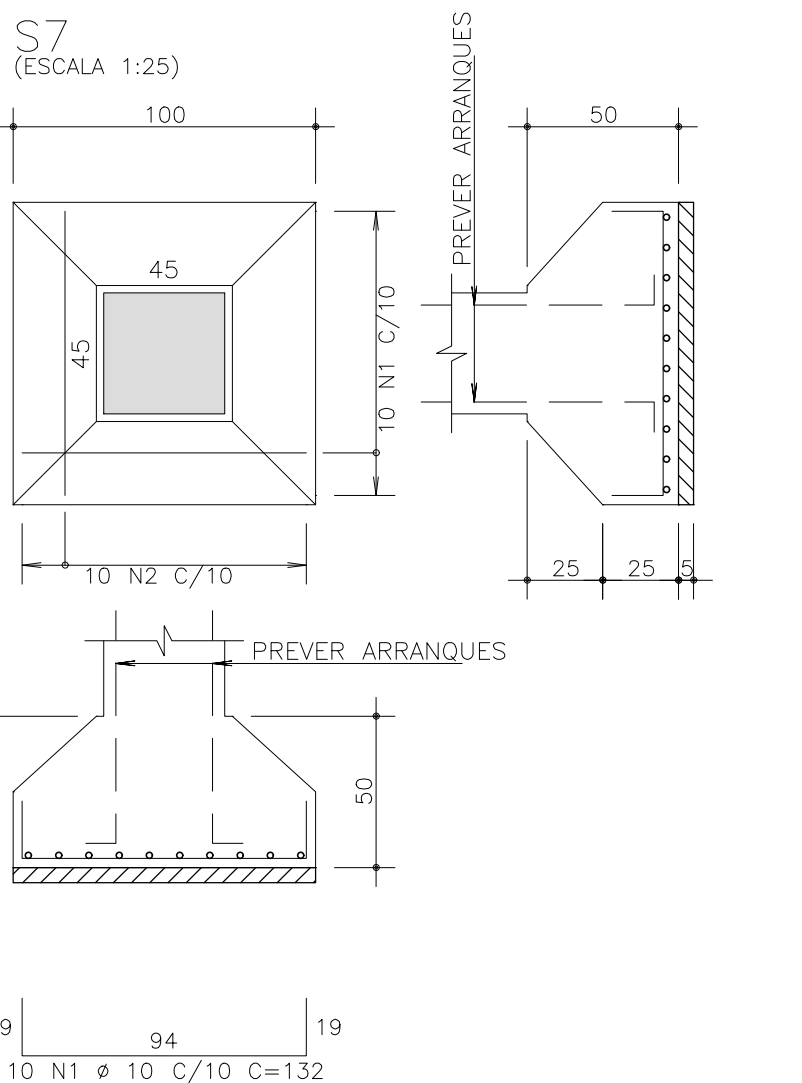
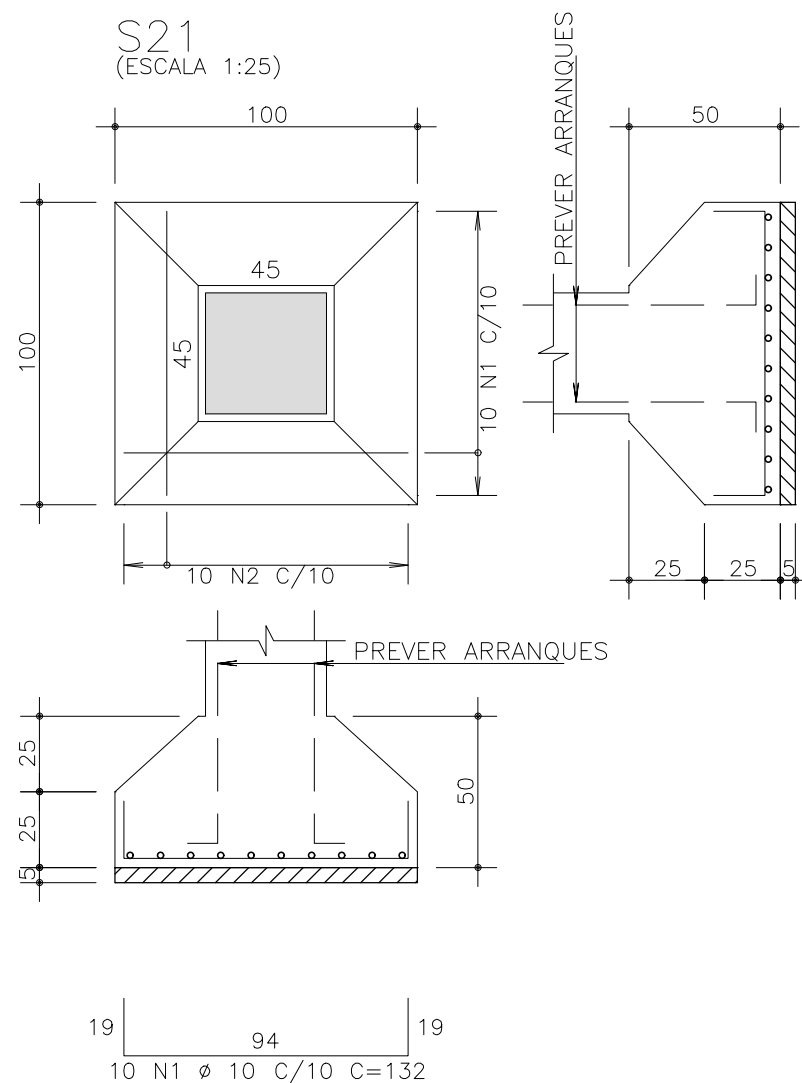


19
10 N2 ø 10 C/10 C=132



17
10 N2 ø 10 C/10 C=128



17
10 N2 ø 10 C/10 C=128

AÇO	POS	BIT (mm)	QUANT	COMPRIMENTO	
				UNIT (cm)	TOTAL (cm)
S6	50A	1	10	10	132
	50A	2	10	10	128
S7	50A	1	10	10	132
	50A	2	10	10	128
S8	50A	1	10	10	132
	50A	2	10	10	128
S10	50A	1	10	10	128
	50A	2	10	10	132
S12	50A	1	10	10	128
	50A	2	10	10	132
S18	50A	1	10	10	128
	50A	2	10	10	132
S19	50A	1	10	10	132
	50A	2	10	10	128
S20	50A	1	10	10	128
	50A	2	10	10	132
S21	50A	1	10	10	132
	50A	2	10	10	128
S22	50A	1	10	10	128
	50A	2	10	10	132
S23	50A	1	10	10	132
	50A	2	10	10	128
S24	50A	1	10	10	128
	50A	2	10	10	132

RESUMO AÇO CA 50-60			
AÇO	BIT (mm)	COMPR (m)	PESO (kg)
50A	10	312	193
Peso Total		50A =	193 kg

fck 250. kg/cm2 - C25

PROJETO: PROJETO ESTRUTURAL

PROPRIETÁRIO: Schuring & Schuring

OBRA: PREFEITURA MUNICIPAL DE VÁRZEA GRANDE

RESP. TEC. EXECUÇÃO: -

END.: Av. Julio Campos, SN - Bairro Água Vermelha Várzea Grande MT

AUTORES DO PROJETO: André Luiz Schuring Eng.º Civil - CREA 8697/D-MT

ASSUNTO: DET ARM SAPATAS

PECAS DETALHADAS: S6 / S7 / S8 / S10 / S12 / S18 / S19 S20 / S21 / S22 / S23 / S24

FCK: 250 ESCALA: 1:50

DIREITOS AUTORAIS RESERVADOS. VERIFICAR MEDIDAS NA OBRA.

DATA: 18/05/2020

FOLHA No. 05